

# FAST FORWARD TO **YOUR** SUCCESS ▶▶▶

PERFECTA



**TEEPACK**

wrap your brand in quality

FAST FORWARD  
TO **YOUR**  
**SUCCESS** ▶▶▶

PERFECTA



## The all new PERFECTA

When packing tea, the fast way to better profits is clear:

**More tea bags in less time means more money.**

Add quality, high-tech and useful design – and you get the fastest, most flexible and most innovative double-chamber tea bag machine in the world.



## PACKED WITH PROFITABILITY

***Our goal is easy to explain:***

*We aim to be faster than all the competition. More efficient and more user-friendly too. A double-chamber tea bag packaging machine that makes it easier than ever for you to produce more profitably and with higher quality.*

***And we've achieved this goal with the new PERFECTA.***

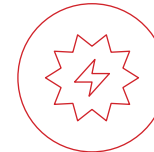
*It will come as no surprise to anyone familiar with our PERFECTA systems that we have again come up with something really outstanding. Not just an upgrade, but a revolution in terms of maximum speed and efficiency, flexibility and modularity, user-friendliness and support – and, of course, reliability thanks to “Made in Germany” quality.*

# CONTENT



## HIGH PERFORMANCE

PAGE 06



## DESIGN & MODULARITY

PAGE 10



## AR & ONLINE

PAGE 14



## RELIABILITY & SUSTAINABILITY

PAGE 18



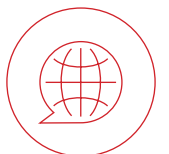
## INNOVATIVE FEATURES

PAGE 22



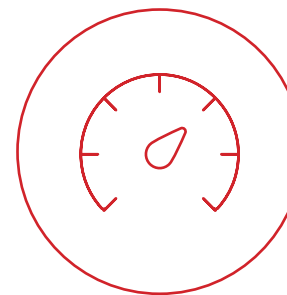
## TECHNICAL SPECIFICATIONS

PAGE 24



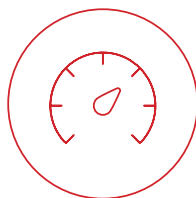
## INTERNATIONAL SERVICE

PAGE 34



MORE OUTPUT IN LESS TIME:

# **HIGH PERFORMANCE**



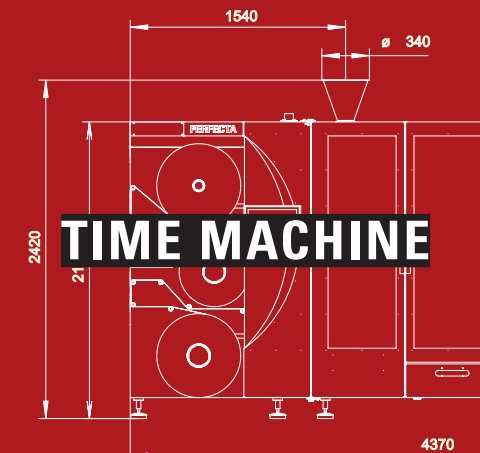
# MAXIMUM SPEED – NO IFS OR BUTS.

*Time is money. That's why every single tea bag that you fill and package more rapidly benefits your bottom line. From now on, you can achieve even greater productivity: up to 450 bags per minute – the new benchmark for success.*

Maximum flexibility, maximum efficiency: The new PERFECTA produces up to 450 double-chamber tea bags per minute from non-heat-seal filter paper with knotted cardboard tags (smallest size available: 20 x 24 mm).

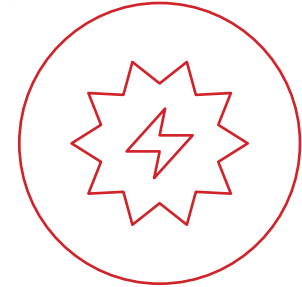
Do you just want to produce naked filter bags? Or pack the tea bags in crimped paper envelopes? Or heat-seal envelopes? Or cold-seal envelopes? No problem: All of these options are possible – and at top speed.

Retrofitting the basic module of the PERFECTA for the different envelope options is easy, thus saving you valuable time. Simply fit the optional units for the desired type of envelope in a few easy steps and your production will soon be up and running again at full speed. The end-of-line module for outer packaging is of course adapted to the high speed of the machine. You'll find more information on the following pages.



**TIME MACHINE**

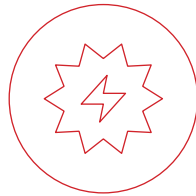
**ALL THIS MAKES THE PERFECTA NOT JUST THE FASTEST, BUT ALSO THE MOST EFFICIENT MACHINE WE HAVE EVER BUILT.**



EASY AND FLEXIBLE USAGE:

# ACCESSIBLE DESIGN & MODULARITY

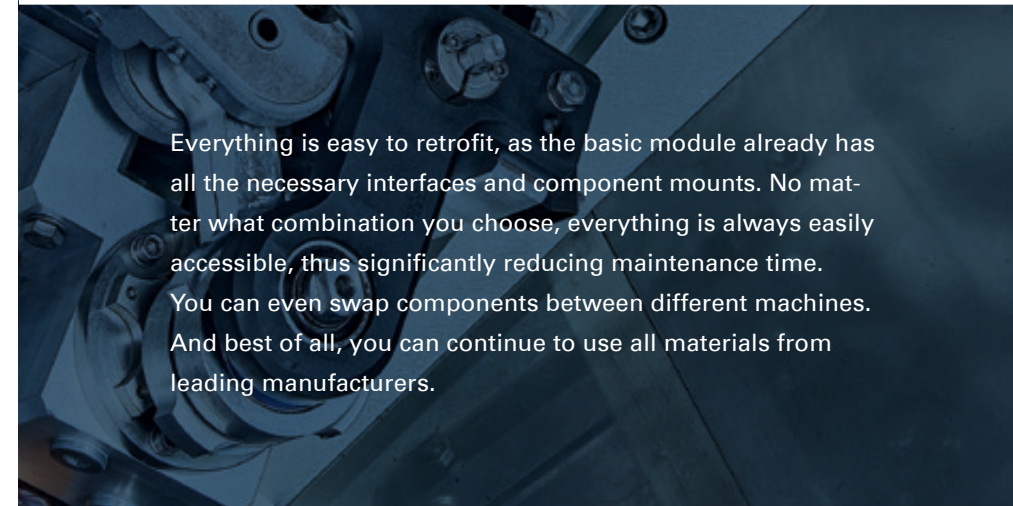
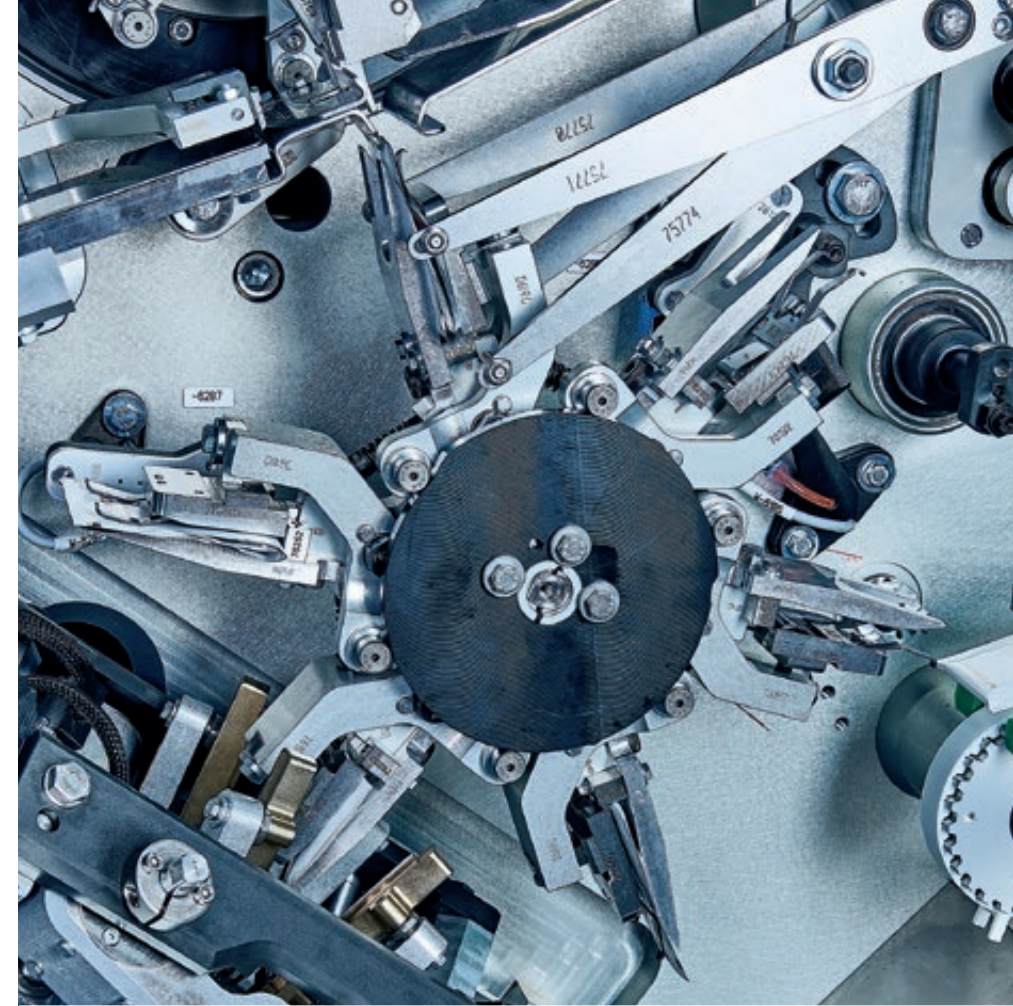
# MULTIPLE CHOICE, MULTIPLE BENEFITS!



*Do you initially just want to produce naked tea bags but would like to keep your options open for later on? For instance, you might want to create envelopes? And outer packaging? All options are possible.*

Combine and expand the basic module of the new PERFECTA according to your individual requirements – it couldn't be simpler. The accessible design and maximum modular concept of the PERFECTA make things easy. This means you can always respond flexibly to new requirements.

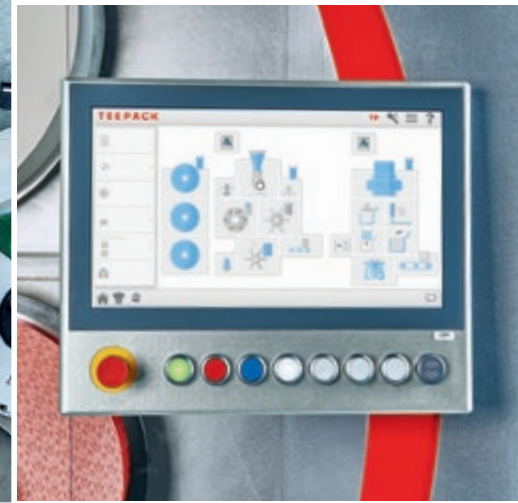
You can easily expand the **basic module** with an optional unit for paper envelopes or hot/cold-seal envelopes. The end-of-line module (EOL) with erector and lid closer for different types of outer packaging can be easily attached to the basic module and quickly converted to the desired type of bag. Flow packs (for naked bags only) are also optional. A splicer – available for filter paper reels, tag reels and envelope reels – can be added later with a minimum of effort.



Everything is easy to retrofit, as the basic module already has all the necessary interfaces and component mounts. No matter what combination you choose, everything is always easily accessible, thus significantly reducing maintenance time.

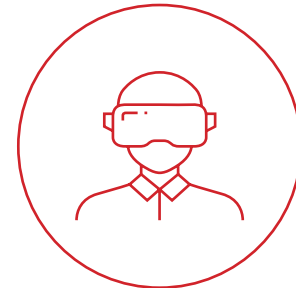
You can even swap components between different machines. And best of all, you can continue to use all materials from leading manufacturers.

For convenient AR maintenance support and live overall equipment effectiveness (OEE) analysis in the cloud, there is now an **innovative IoT module with new touchscreen control panel (HMI)**. Other optional extras include a cleaning arm and splicer.



**ALL THIS MAKES THE PERFECTA NOT JUST THE MOST ACCESSIBLE, BUT ALSO THE MOST FLEXIBLE MACHINE WE HAVE EVER BUILT.**





SIMPLE AND QUICK MAINTENANCE:

# **AR VISUALISATION & ONLINE SUPPORT**



# ENHANCED MAINTENANCE, ENHANCED VISUALISATION.

*Fast and efficient production is important for profitability. Fast and efficient operation and maintenance are equally important.*

The new PERFECTA simplifies both aspects thanks to its accessible modular design. **The innovative IoT module for convenient AR maintenance support and live evaluation of operating data (OEE) in the Teepack cloud makes it even easier for you.** It features a completely new HMI with touch-screen control panel on the base module. With your requirements in mind, the user interface and user guidance have been ergonomically designed with clear graphics. Possible faults are visualised instead of just described.

If you want to directly read out and analyse the **live operating data (OEE)** of the machine – e.g. utilisation data, maintenance messages, material requirements etc. – a connection to the Teepack cloud as an **IoT (service) module** is optionally available.



## AUGMENTED REALITY

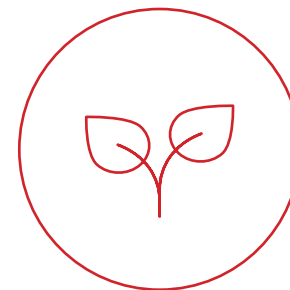
Successful production with the PERFECTA can be simplified even further as an option: Services such as commissioning, maintenance, service and training become more efficient and convenient through the use of customised AR solutions.

The technology can be made visible **via tablet or data glasses**. When scanning with an app on the mobile device, e.g. tablet, special markings on the machine are detected. The app then guides the operator to the affected machine component by means of coloured symbols.

If you view the machine with **data glasses (e.g. Hololens)**, the entire structure appears transparent. This makes the technology completely visible and clearly visualises the steps needed to change the affected part. Gesture control facilitates navigation through the instructions. The version with data glasses can also be used primarily for training purposes.



**ALL THIS MAKES THE PERFECTA NOT JUST THE EASIEST TO MAINTAIN, BUT ALSO THE MOST INNOVATIVE MACHINE WE HAVE EVER BUILT.**



QUALITY "MADE IN GERMANY":

**RELIABILITY,  
LONGEVITY  
& SUSTAINABILITY**



# DELIVERS THE “MADE IN GERMANY” QUALITY YOU WOULD EXPECT.

*Ease of operation and longer maintenance intervals, easily accessible design, high-quality components, innovative technologies – these are the essential foundations for reliability in any machine.*

The new PERFECTA offers all of these features – perfectly. It also adds superior safety standards and durable “Made in Germany” premium quality.

The innovative technology and extremely flexible modular design ensure that your new tea bag packing machine will remain profitable over its long service life. All components can be replaced quickly and easily. The entire machine is easily accessible, user-friendly and maintenance is much less time-consuming than previously.



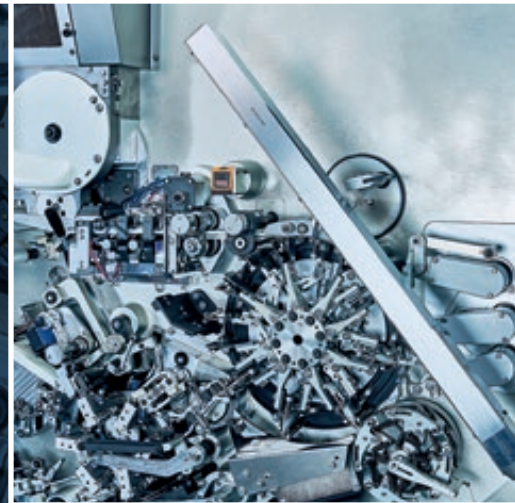
**PIT STOP maintenance strategies** ensure less downtime.

The new hygienic design allows for faster cleaning since fewer components come into contact with the tea dust. A **cleaning arm** is optionally available that cleans the components **during production**.

The exceptional quality of the components ensures high production and cost efficiency:

- **Maintenance intervals** become **more predictable** through condition monitoring (predictive maintenance)
- **Consumption of spare parts** is significantly **reduced**

The durability and precision of all components contribute decisively to the machine’s unusually **long service life** and the extremely efficient use of all materials – including, of course, the tea. **An economic and an environmental win!**



**ALL THIS MAKES THE PERFECTA NOT JUST THE HIGHEST-QUALITY, BUT ALSO THE MOST DURABLE MACHINE WE HAVE EVER BUILT.**



HIGH PERFORMANCE.  
OUTSTANDING FLEXIBILITY.

# INNOVATIVE FEATURES



*Easily interchangeable components with shorter setup times. Enhanced ease of use for more production efficiency. Reduced maintenance time.*

*Reduced downtimes thanks to PIT STOP maintenance strategies.*

## DOSING STATION

Easily accessible dosing adjustment. Faster changeover of dosing parts. Perfect tea dosing with servo technology.

## HYGIENIC DESIGN

Hygienic design enables faster cleaning.

## PNEUMATIC COMPONENTS

The latest state-of-the-art pneumatic components.

## ELECTRONIC COMPONENTS

New fast fieldbus delivers precise sensor signals and extended diagnostic information.

## HUMAN MACHINE INTERFACE

New HMI with clear graphic symbols.

## TAG PUNCH

Tag feed system that enables greater flexibility and more design options for the tag.

## OPTIONAL: IOT MAINTENANCE SUPPORT

Remote control. Digital networking possible via defined interface.

## OPTIONAL: AR SUPPORT

Augmented reality simplifies maintenance via tablet or data glasses.

## ADD-ON MODULE: WEIGHT CHECKING SYSTEM

Automatic weight check of every box and adjustment of the motorised weight regulation system. Faulty box ejection.

## ADD-ON MODULE: SPLICER

Splicer for filter paper reels, tag reels and envelope reels.

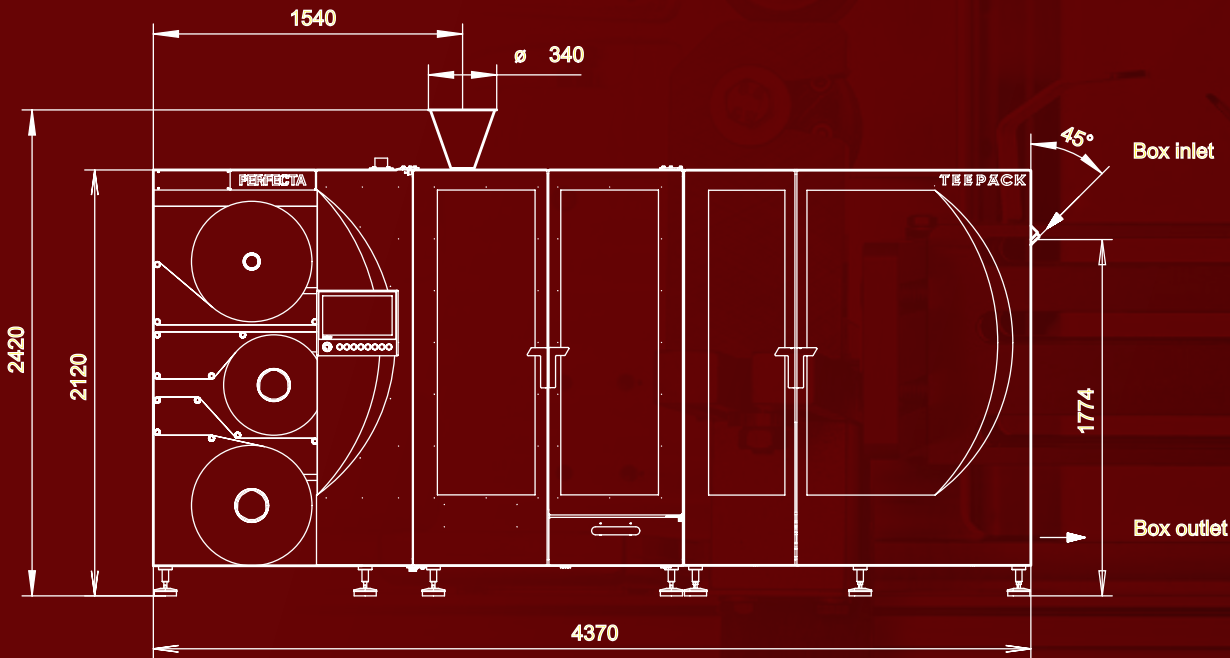
## OPTIONAL: END-OF-LINE MODULE

Integrated box erector and lid closer for various box types and up to 30 boxes/min. Flow Pack also possible.



STANDARD EQUIPMENT

# AUTO-PACKAGING-UNIT (APU)



**APU (Auto-Packaging-Unit) is an EOL without box erector and lid closer. The machine is prepared to be retrofitted with a box erector and lid closer.**

## APU

- without box erector (boxes are fed erected)
- without lid closer
- 1–4 rows (naked bags)
- 1–3 rows (paper envelope bags + heat-seal envelope bags)
- output: up to 30 boxes/min + heat-seal envelope bags)

## APU – OPTIONS

- divider strip inserter
- barcode reader
- box embossing in lid area
- weight checking system with faulty box ejection

## TECHNICAL DATA WITH APU

**Production speed:**  
up to 450 bags/minute

**Length x width:**  
approx. 4370 x 1550 mm

**Height with hopper:**  
approx. 2420 mm

**Height without hopper:**  
approx. 2120 mm

**Net weight:** approx. 4200 kg

**Electric power connection:** 20 kW

**Average power consumption:** 8 kW

**Maximum power consumption:**  
12 kW

**Operating pressure:** 6 bar

**Compressed air consumption:**  
up to max. 250 NI/min.

**Compressed air connection:** 1/2"

Note: The power consumption and compressed air consumption depends on the machine equipment.

PACKAGING	SPLICER	PERFECTA MODULES	TEA BAGS
		<p>MAIN MODULE      APU-DEVICE</p>	



CUSTOMIZED EQUIPMENT

# END-OF-LINE-MODULE (EOL)

## EOL – OPTIONS

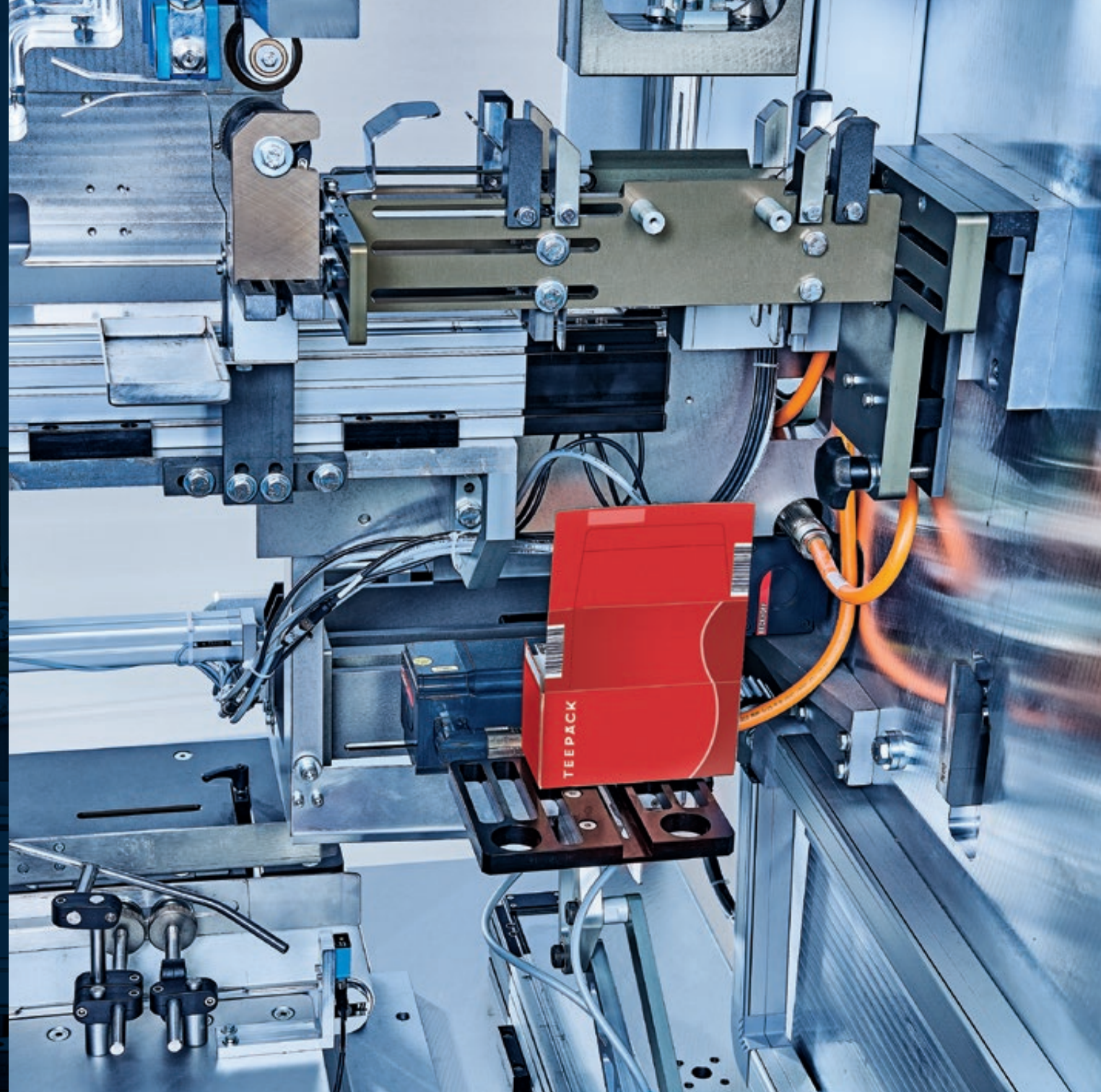
- with box erector and lid closer
- 1–4 rows (naked bags), 1–3 rows (paper envelope bags + heat-seal envelope bags or cold-seal envelope bags)
- Flow Pack module
- barcode reader on box blanks
- divider strip inserter
- roller embossing system
- weight checking system with faulty box ejection

## BOX ERECTING DEVICE

- erects cardboard boxes from plain blanks
- output: up to 30 boxes/min

## LID CLOSING DEVICE

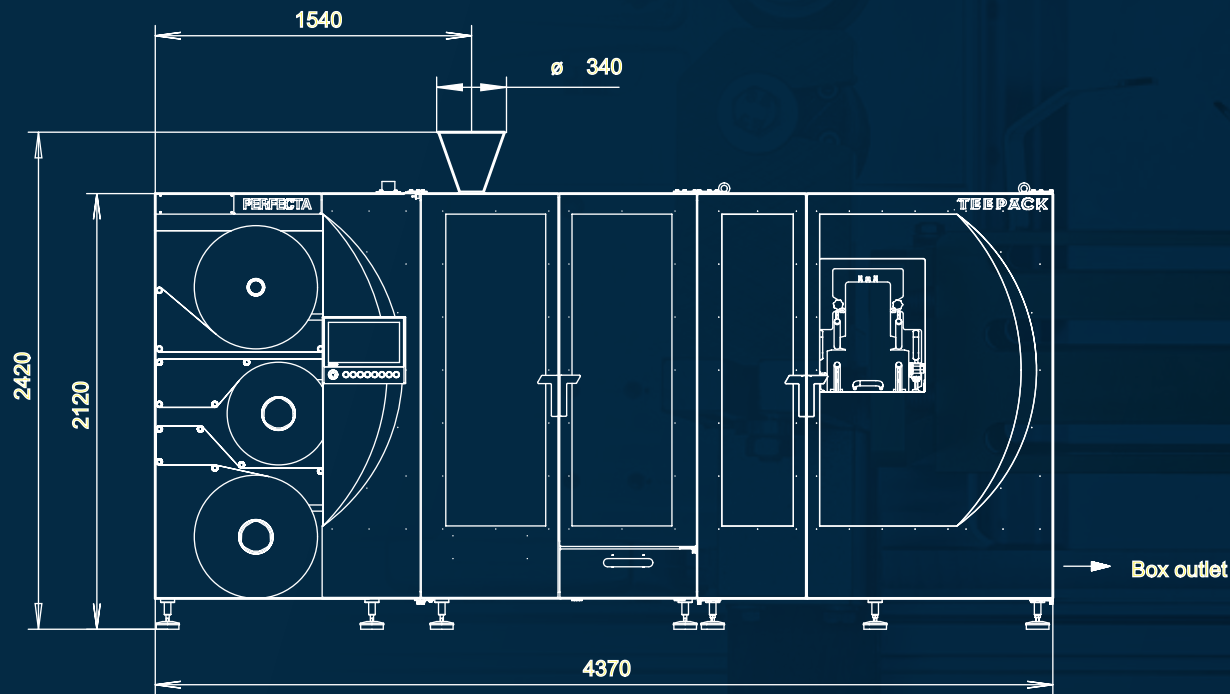
- closes the lid of the filled boxes
- output: up to 30 boxes/min





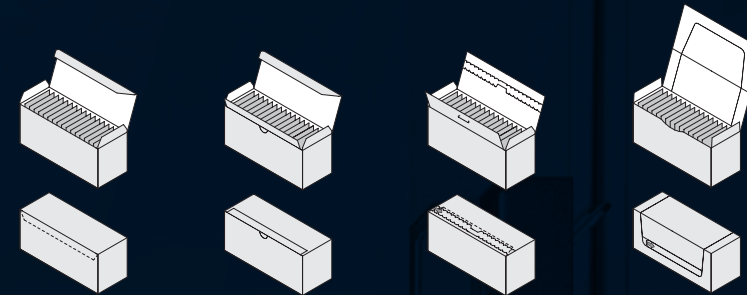
CUSTOMIZED EQUIPMENT

# END-OF-LINE-MODULE (EOL)



## POSSIBLE BOXTYPES & SIZES

- standard tuck-in closure box, Kurzlaschen closure box, tear strip closure box, aroma box, open trays
- sizes: W 42–206 mm, H 60–79 mm, L 115–220 mm; for 15–160 naked bags, 15–120 paper envelope bags, 15–120 heat-seal envelope bags (10 bags on request)
- additional glue dots on dust flaps possible
- other box types on request



The **TUCK-IN CLOSURE BOX** is a standard box used by most tea manufacturers worldwide.

The **KURZLASCHEN CLOSURE BOX** offers more security by a glued short flap (Kurzlasche) as well as a re-closable solution and doesn't need overwrapping.

The **TEAR STRIP CLOSURE BOX** offers more security by a glued lid as well as a re-closable solution and doesn't need overwrapping.

The **AROMA BOX** offers best security and aroma protection without overwrapping. All sides of the boxes are glued. This creates a specially sealed box.

## TECHNICAL DATA WITH EOL

**Production speed:**  
up to 450 bags/minute

**Length x width:**  
approx. 4370 x 1550 mm

**Height with hopper:**  
approx. 2420 mm

**Height without hopper:**  
approx. 2120 mm

**Net weight:** approx. 4300 kg

**Electric power connection:** 20 kW

**Average power consumption:** 8 kW

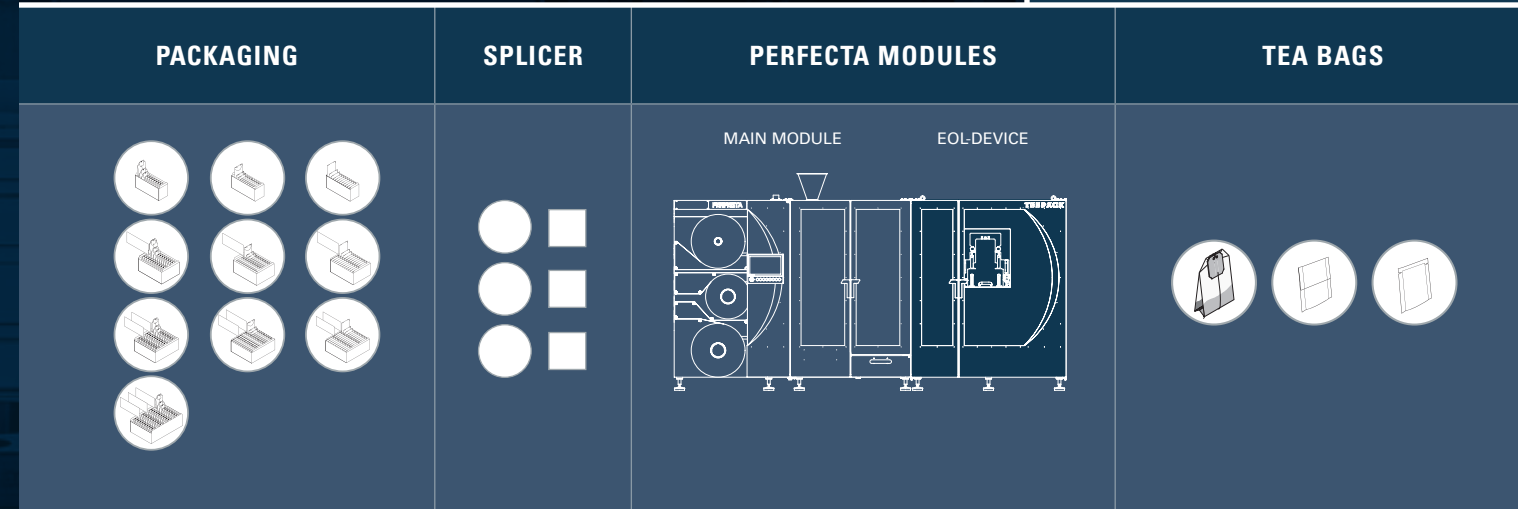
**Maximum power consumption:**  
12 kW

**Operating pressure:** 6 bar

**Compressed air consumption:**  
up to max. 350 NI/min.

**Compressed air connection:** 1/2"

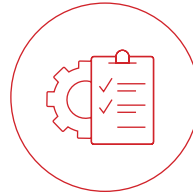
Note: The power consumption and compressed air consumption depends on the machine equipment.





TECHNICAL SPECIFICATIONS:

# STANDARD



## BAGS

Size	TEA BAG SIZES			max. bag volume (cm <sup>3</sup> )
	W (mm)	H (mm)		
02	40	60		9.5
03	44	60		12.5

## ENVELOPES

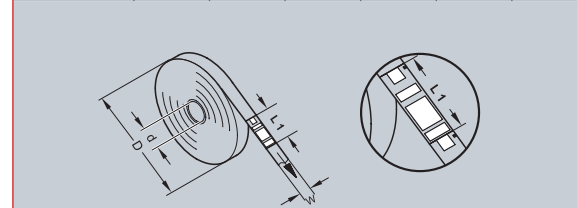
Size	ENVELOPE SIZES – CRIMPED PAPER			max. bag volume (cm <sup>3</sup> )
	W (mm)	H (mm)		
02 (40x60)	56	67		9.5
02 (40x60)	55	67		9.5
03 (44x60)	60	67		12.5
03 (44x60)	63	72		12.5

Size	ENVELOPE SIZES – HEAT-SEAL			max. bag volume (cm <sup>3</sup> )
	W (mm)	H (mm)		
02 (40x60)	66	77		7.0
02 (40x60)	63	72		7.0
03 (44x60)	66	77		9.5
03 (44x60)	63	72		9.5

## REELS

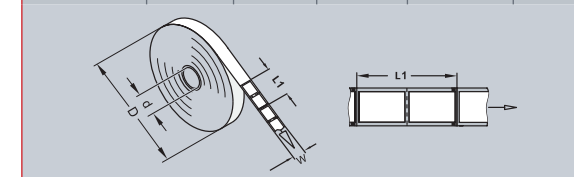
Size	FILTER PAPER REEL SIZES					g/m <sup>2</sup>
	Dmax (mm)	d+2 (mm)	L (mm)	W+0.5 (mm)		
02 (40x60)	600	75	152	94		12
03 (44x60)	600	75	152	103		12

Size	Bag type	ENVELOPE PAPER REEL SIZES					g/m <sup>2</sup>
		Dmax (mm)	d+1 (mm)	L1+/-0.5 (mm)	W+/-0.2 (mm)		
02 (40x60)	56x67	600	75 or 152	144.5 (145)	56	60-70	
02 (40x60)	55x67	600	75 or 152	145	55	60-70	
03 (44x60)	60x67	600	75 or 152	144.5 (145)	60	60-70	
03 (44x60)	63x72	600	75 or 152	157.5	63	60-70	



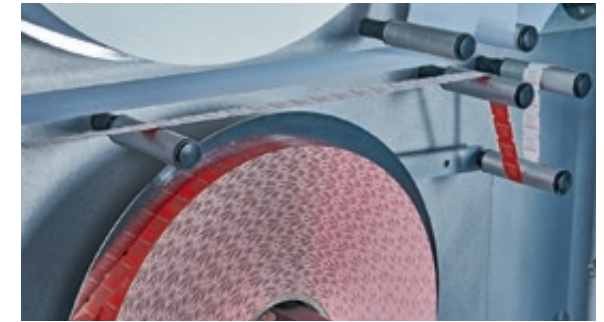
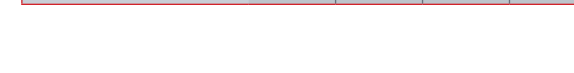
## ENVELOPE FOIL REEL SIZES

Size	Bag type	Dmax (mm)	d+1 (mm)	L1+/-0.2 (mm)	W+/-0.3 (mm)
02 (40x60)	66x77	600	75 or 152	154	66
02 (40x60)	63x72	600	75 or 152	144	63
03 (44x60)	66x77	600	75 or 152	154	66
03 (44x60)	63x72	600	75 or 152	144	63



## SPOOLS

Size	THREAD SPOOL SIZES			
	Dmax	d+/-0.3	Hmax	
02	180	47	180	
03	180	47	180	



## CARDBOARD

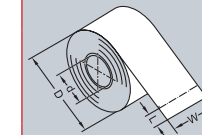
### CARDBOARD TAG SIZES (standard size "Z")

Size	W (mm)	L (mm)	d (mm)	Dmax (mm)
Z	28	32	120 or 152	500
M	28	28	120 or 152	500
X	26	28	120 or 152	500
T	25.4	31.75	120 or 152	500
Q	23	28	120 or 152	500
Y	20	24	120 or 152	500



### CARDBOARD DIVIDER SIZES

Size	D	W	d+1	L envelope & tag type	Paper thickness approx.
02	550	110-215	152	43	0.3
03	550	110-215	152	43	0.3

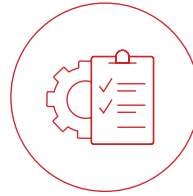


## PRODUCTION SPEED

Up to 450 bags/min (naked bag, paper envelope, cold-seal envelope, heat-seal envelope).

TECHNICAL SPECIFICATIONS:

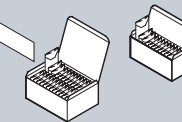
# STANDARD



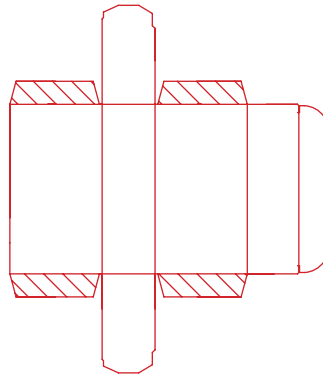
## 2 CYCLE TIME SECONDS/CYCLE

for 15 bags/box

### CARDBOARD

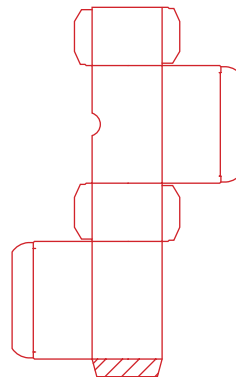
CARDBOARD MATERIAL					
	<table border="1"> <tr> <td>1 row up to 160 mm length</td> <td>Multi-row boxes</td> </tr> <tr> <td>280-320 g/m<sup>2</sup></td> <td>360-400 g/m<sup>2</sup></td> </tr> </table>	1 row up to 160 mm length	Multi-row boxes	280-320 g/m <sup>2</sup>	360-400 g/m <sup>2</sup>
1 row up to 160 mm length	Multi-row boxes				
280-320 g/m <sup>2</sup>	360-400 g/m <sup>2</sup>				

### BOXES



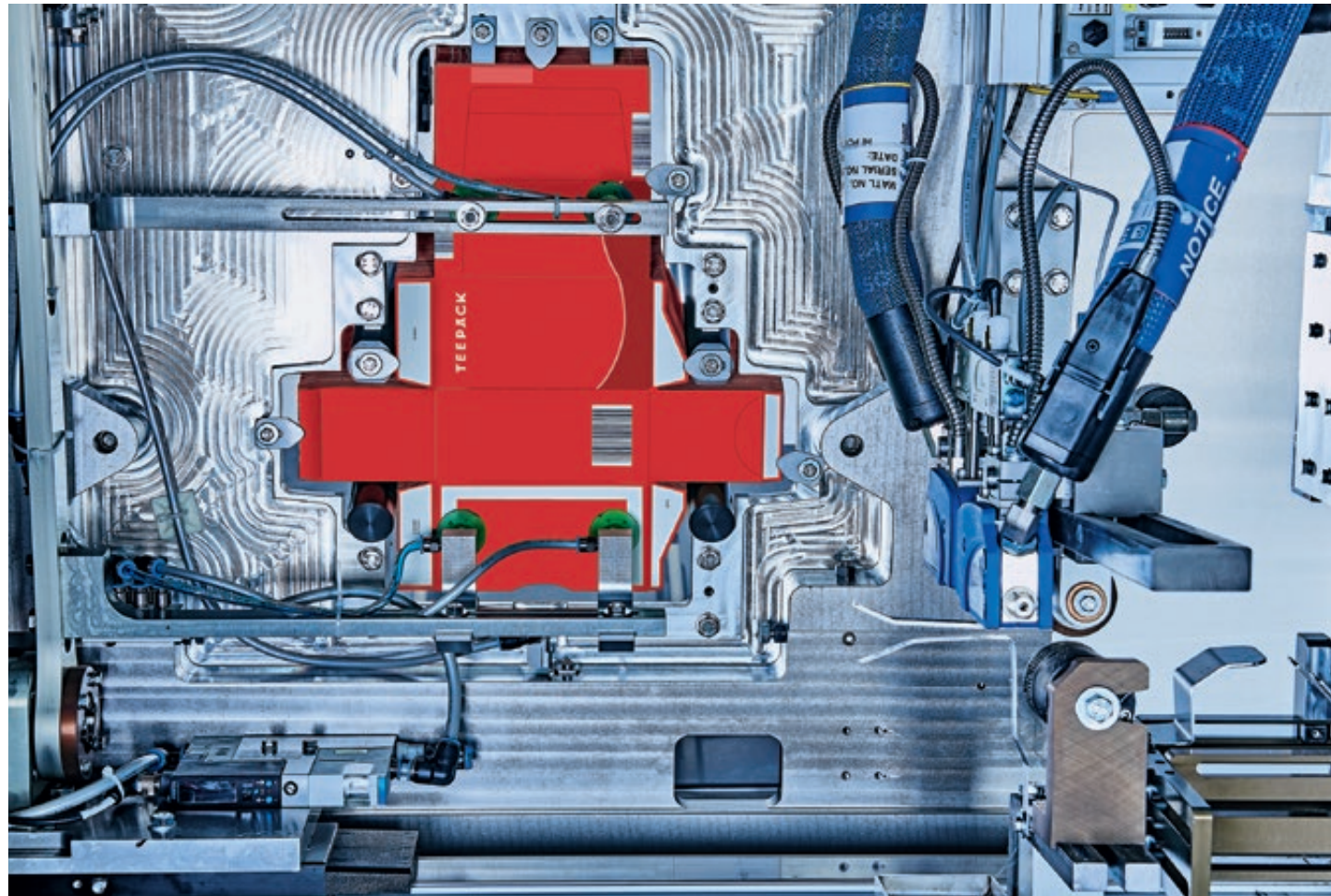
### FLAT BLANK

for cartoning attachment for 15 to 160 bags per box



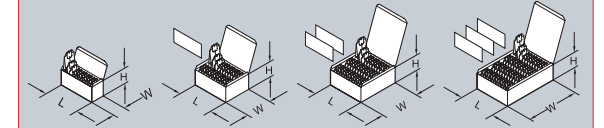
### FOLDING BOX

for cartoning attachment for max. two rows per box

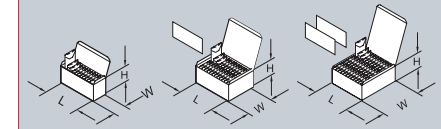


### BOX SIZES

for 15 to 160 filter bags with tag (10 filter bags on request)

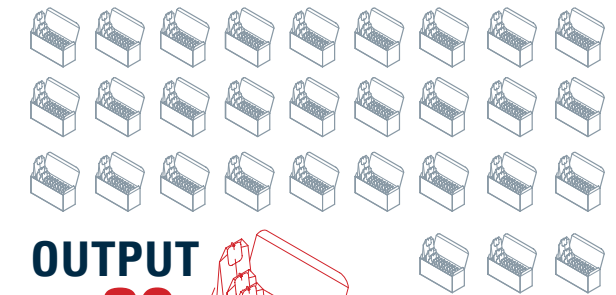


for 15 to 120 filter bags in crimped envelope paper (10 filter bags on request)



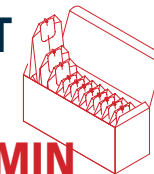
for 15 to 120 filter bags in heat-seal envelope (10 filter bags on request)

	Format 02	
	max	max
W	42	206
H	60	79
L	115	220

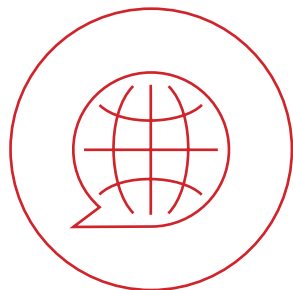


### OUTPUT

UPTO **30**  
BOXES/MIN



Up to 30 boxes/min  
(cycle time: 2 seconds/  
cycle for 15 bags/box)



“MADE IN GERMANY” WORLDWIDE:  
**INTERNATIONAL  
SERVICE**

*We offer rapid international service for all your needs – including consulting, planning and machine configuration, after-sales support and add-on services. We provide a complete all-round service package for your machines, for your employees and for maximum efficiency.*

Our “Made in Germany” quality services are available worldwide: in Australia, Bangladesh, China, India, Indonesia, Iran, Italy, Japan, Kazakhstan, Nepal, Portugal, Russia, South Africa, South Korea, Spain, Sri Lanka, Taiwan and Ukraine – and of course Germany.

You can find contact details of our representatives at  
[www.teepack.com/en/contact/agencies](http://www.teepack.com/en/contact/agencies)

**Enquiries**

Don't hesitate to contact us with requests concerning a new machine, spare parts and technical advice, technical procurement, or general enquiries. Go to  
[www.teepack.com/en/contact/enquiry](http://www.teepack.com/en/contact/enquiry)

**or simply call us: +49 2132 976 - 0**

THE STORY BEHIND THE PERFECTA:

**“OUR GOAL HAS  
ALWAYS BEEN  
TO BUILD THE  
FASTEST, MOST  
FLEXIBLE  
AND MOST  
INNOVATIVE**

**DOUBLE-  
CHAMBER TEA  
BAG MACHINE  
IN THE WORLD.  
NO MORE  
AND NO LESS.”**



